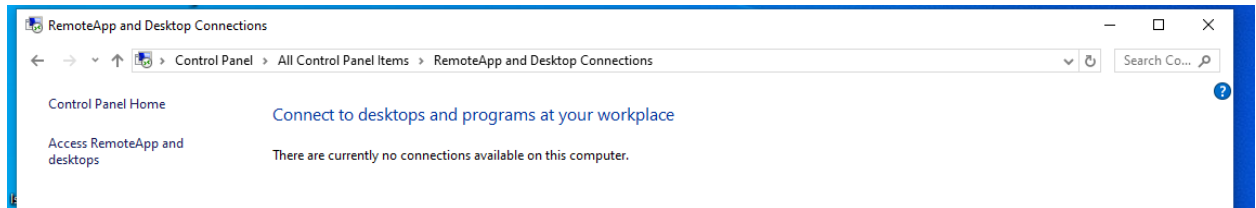


Successware 21 Procedure

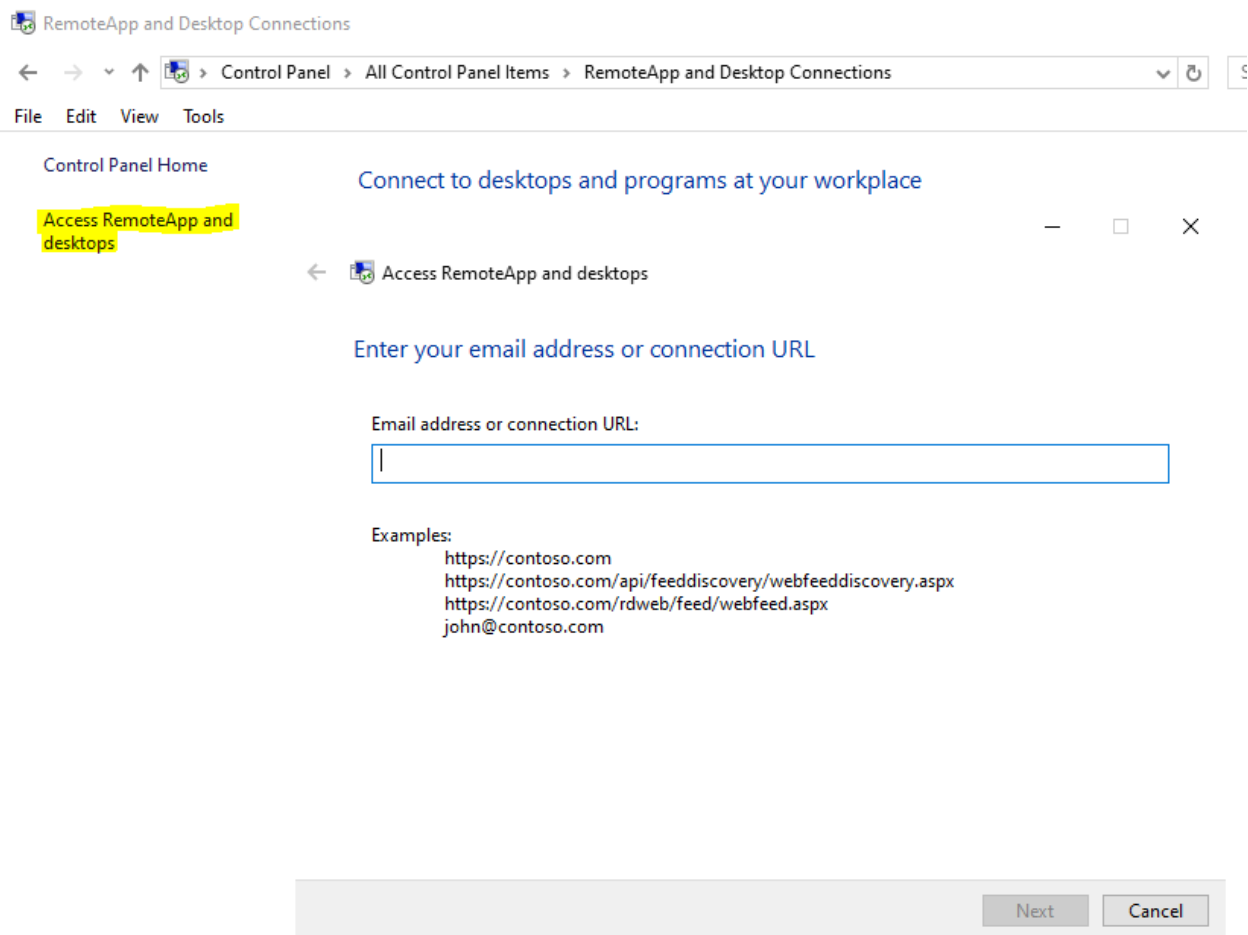
How to connect to RemoteApp and Desktop Connections

Please note this where you use First Login Information.

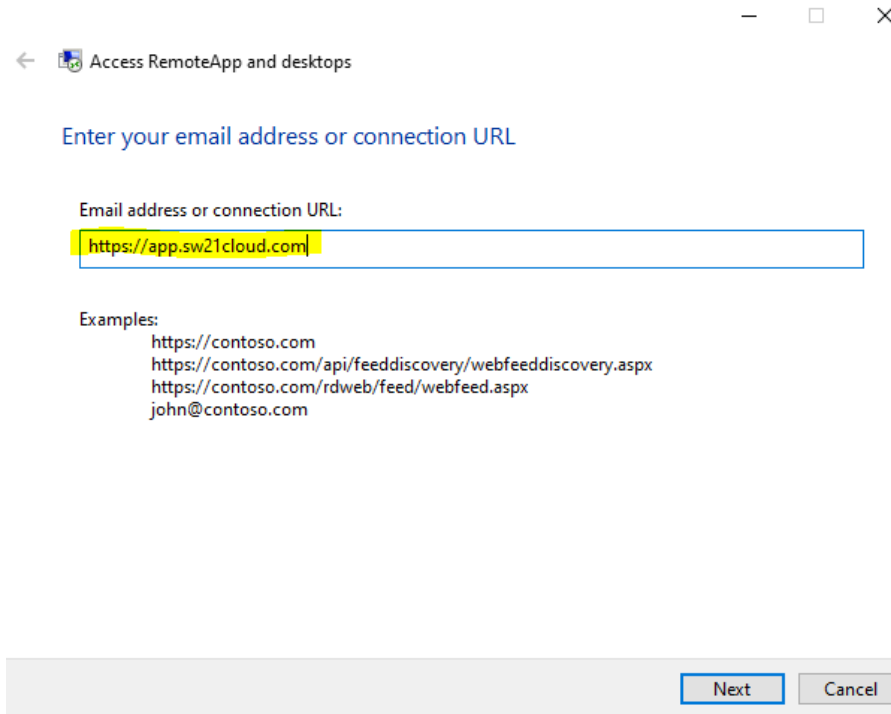
- 1.) From your local machine search in Control Panel the RemoteApp and Desktop Connection feature



- 2.) Click on Access RemoteApp and desktops (a new window will open)



3.) Under address or connection URL please insert the new link <https://app.sw21cloud.com> and click next.



← Access RemoteApp and desktops

Enter your email address or connection URL

Email address or connection URL:

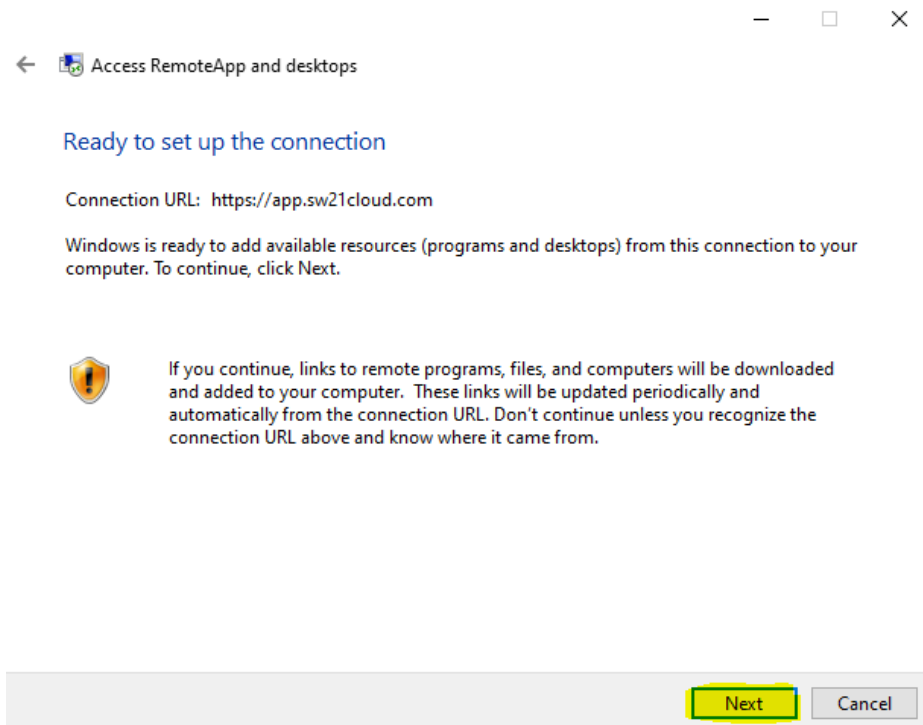
<https://app.sw21cloud.com>

Examples:

- <https://contoso.com>
- <https://contoso.com/api/feeddiscovery/webfeeddiscovery.aspx>
- <https://contoso.com/rdweb/feed/webfeed.aspx>
- john@contoso.com

Next Cancel

4.) The following message should be visible on your machine, click next.




← Access RemoteApp and desktops

Ready to set up the connection

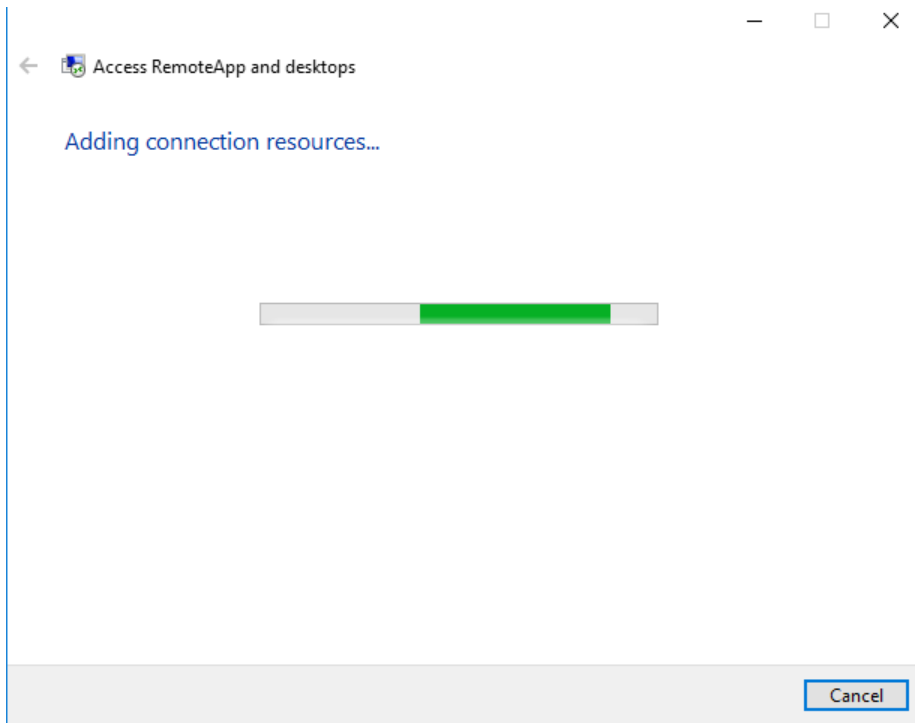
Connection URL: <https://app.sw21cloud.com>

Windows is ready to add available resources (programs and desktops) from this connection to your computer. To continue, click Next.

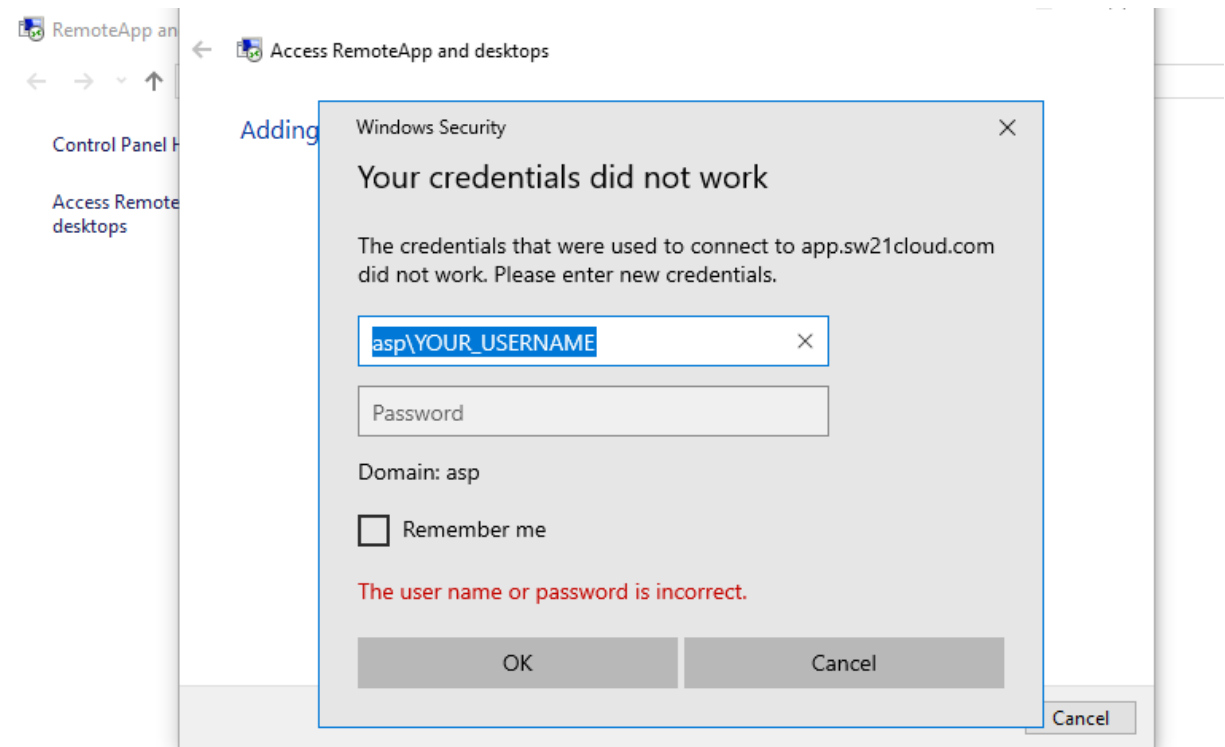
 If you continue, links to remote programs, files, and computers will be downloaded and added to your computer. These links will be updated periodically and automatically from the connection URL. Don't continue unless you recognize the connection URL above and know where it came from.

Next Cancel

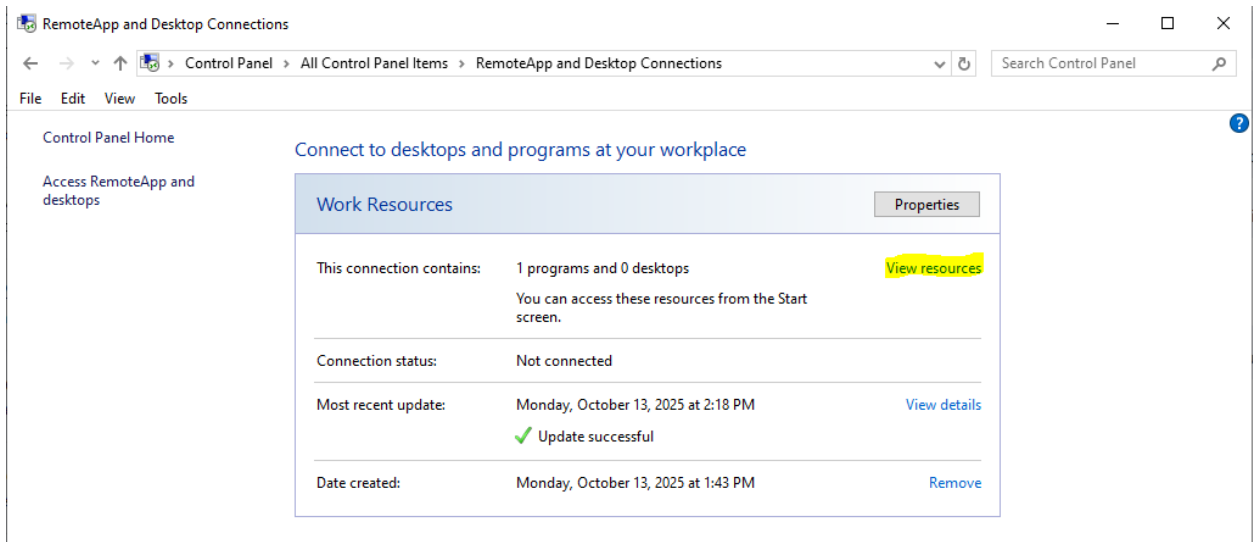
5.) You will see the next image for few seconds / minutes:



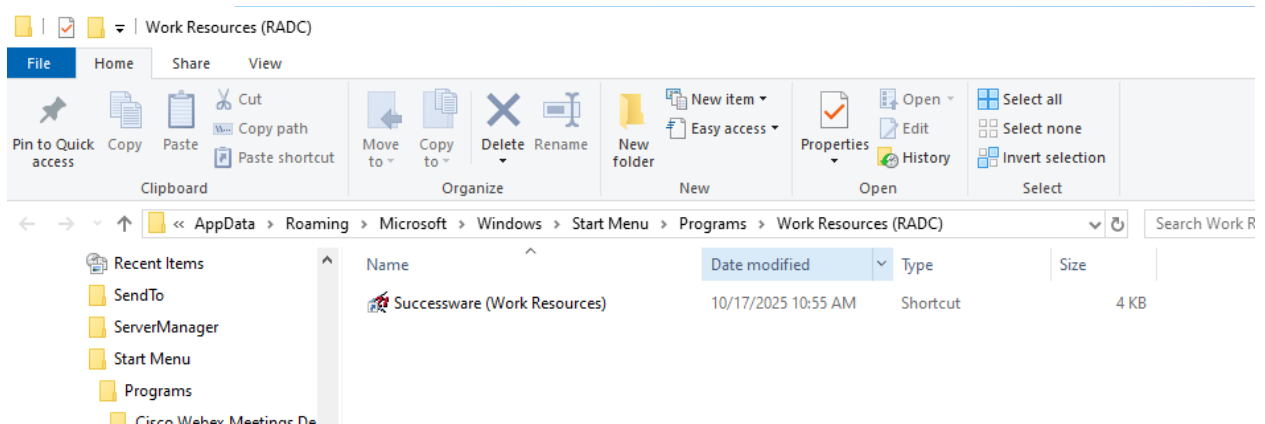
6.) Below window will appear where you need to type your First username and password.
Please ensure you add the asp\ in front of your username (example - asp\jdoe)



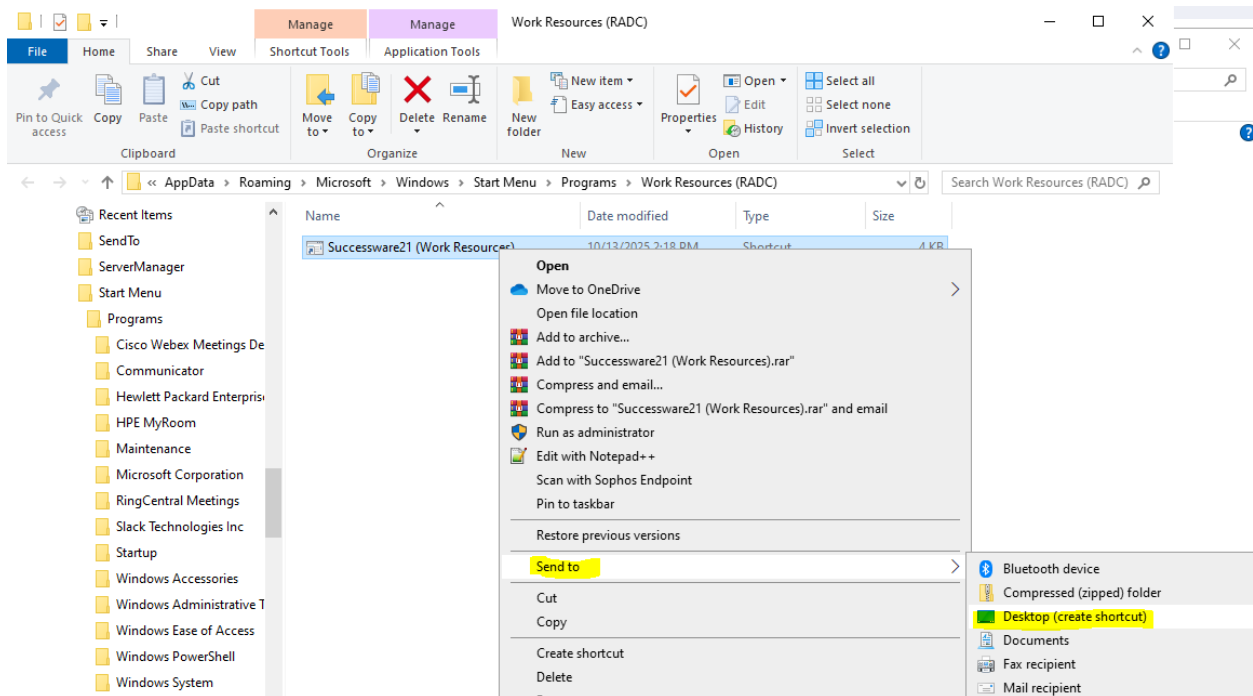
7.) Wait few seconds /minutes for this to finish and connect to your work resources > then you can click on view resources to see the SW21 application:



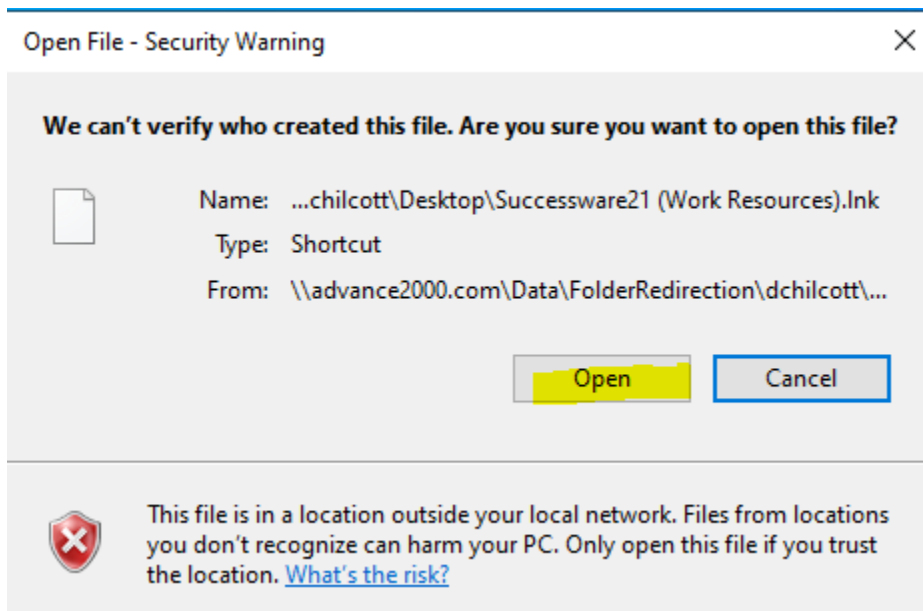
8.) A window will appear with the applications available for your user



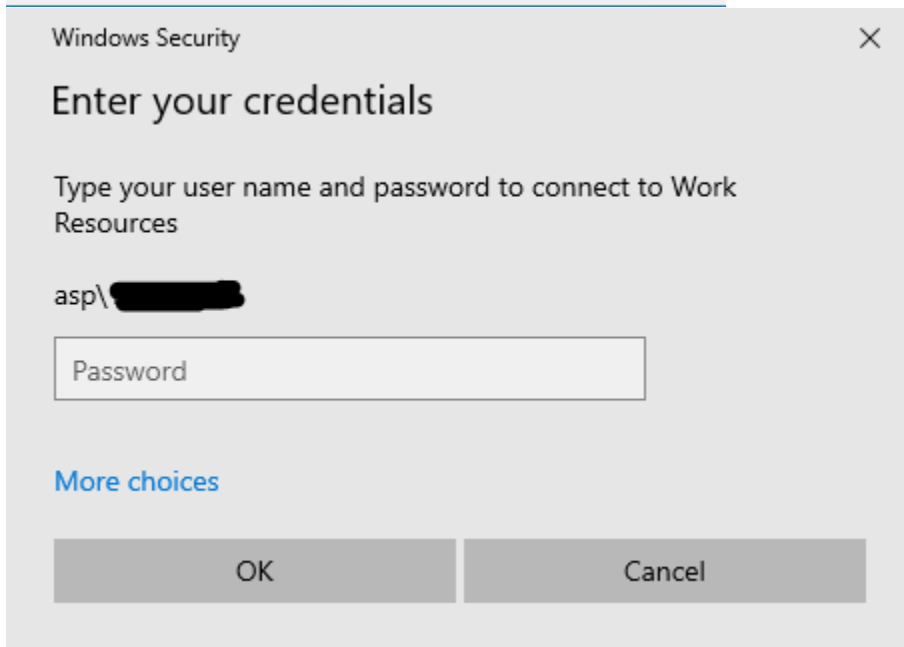
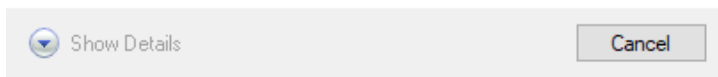
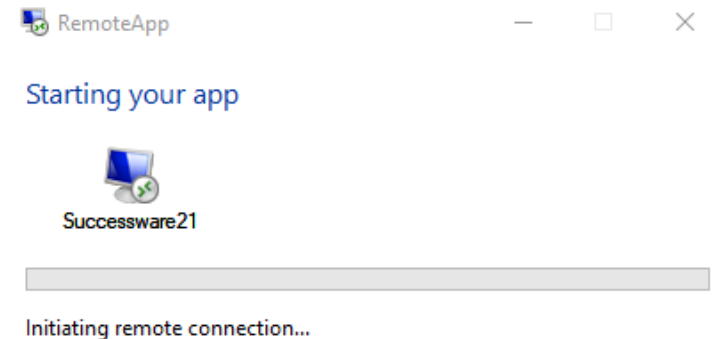
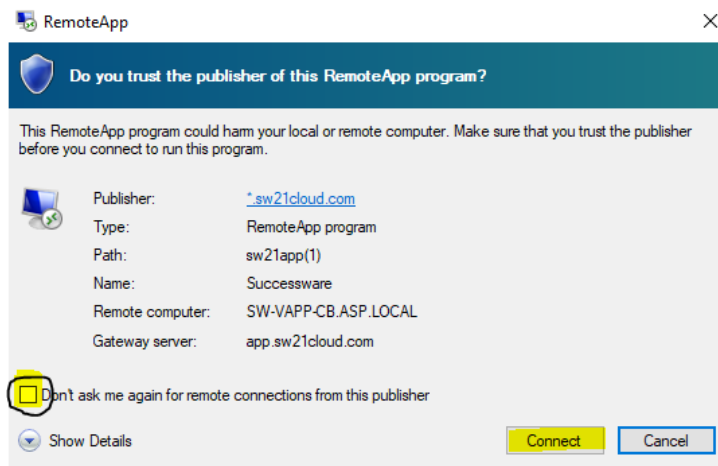
9.) You can create a Desktop shortcut for the application, by right-clicking and selecting “Send to” -> Desktop (create shortcut)



10.) When you launch the new shortcut you may see a warning, please click on “Open”



11.) You may see the following windows. Check the box and click connect. If prompted enter your password.



12.) You will now see the application login window and you have successfully accessed Advance2000's hosted platform!

